



Installation and Operating Instructions

VAZ 3 - Payment machine for dispensing ZT 1 tokens

Function of the payment machine for dispensing tokens

BASIC TECHNICAL DATA

| | |
|--|---|
| Accepted coins: | 1; 2; 5; 10; 20; 50 CZK, 0.1; 0.2; 0.5; 1; 2 EUR, ZT 2 tokens or other coins according to customer requirements |
| Maximum device capacity: | 600 pcs of ZT 1 - Order No. 1211990510, packed in 100 pcs |
| Supply voltage: | 230 VAC |
| Power consumption of coin-operated machine: | 30 VA, 50 VA during token dispensing |
| Material: | stainless steel AISI 304, brushed finish |
| Modular equipment: | payment terminal (supplied by customer), recommended type Ingenico SELF 2000 |

- VAZ 3 is a coin-operated machine designed for dispensing ZT 1 tokens. The machine must be installed in a wall with access from both sides.
- The user accesses the machine from one side, which only contains the coin slot, optionally a payment terminal, the token dispensing opening, and indication elements. This side is not openable.
- The operator accesses the machine from the other (rear) side after unlocking the door. This access is used for replacing token magazines and collecting coins from the cash box.
- The machine contains three pairs of magazines; each magazine has a capacity of 100 tokens. Token dispensing starts from the third pair of magazines.
- If token dispensing starts from the first pair of magazines (the second and third pairs are considered empty), this status is sent as a warning to an e-mail address. If there are fewer than 20 tokens left in the first pair of magazines (10 pieces in the front or 10 pieces in the rear magazine of pair number one), the machine is switched to out-of-service mode. The coin acceptor is blocked and card payments are not accepted. This status is sent as an error to an e-mail address.
- **Tokens with the slider must be correctly stacked in the magazine; otherwise, token dispensing will not function!!! - see attached photo.**

Site preparation for installation

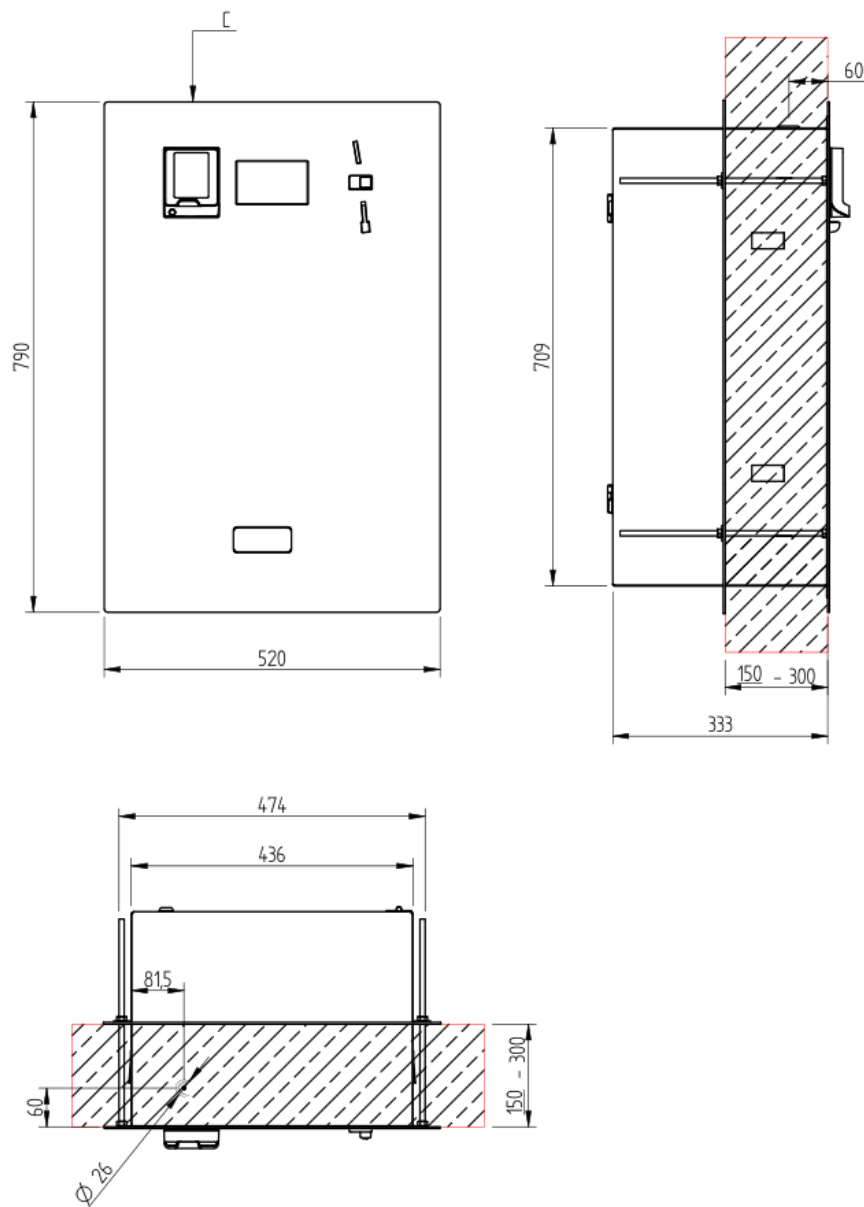
- Prepare an opening in the wall according to the drawing. The opening must be rectangular and must not be skewed. The recommended height of the upper edge of the opening is 1500–1700 mm. The machine is designed for installation in a wall with a thickness of 150-300 mm. If the front side of the machine is located on the external facade of the building, the machine must be protected from rain, for example by a suitable canopy.

Installation of the machine:

- Remove the anchoring frame. Insert the machine into the prepared opening in the wall, connect the 230 VAC power supply and an Ethernet cable terminated with an RJ45 connector. The free cable end should be approximately 100 cm long. Secure the corners of the cabinet with polyurethane foam - do not apply foam to the flat surfaces - as this could deform the cabinet walls; then bolt together the front and rear sides. Foaming is not necessary if the wall opening is cut accurately and the machine is fitted into the opening without gaps. The machine must be installed vertically. Fit the anchoring frame onto the threaded rods and tighten it to the wall with nuts.



Drawing



1) Prepared recess for installation:

VAZ 3 710 mm x 440 mm, for wall thicknesses of 150-300 mm

2) CONDUIT(S), external diameter MAX. dia. 40 mm – position according to the drawing.

3) Power cable 230 VAC, any two-core cable with a conductor cross-section of 0.5–1 mm², e.g. CYSY 2 x 0.75.

4) Ethernet cable, RJ45 connector (for connecting the control electronics and, optionally, the payment terminal to the internet, according to local conditions).



OPERATING DESCRIPTION

Payment by coins:

- By inserting coins in a value corresponding to the token price set by the operator, or in a value divisible by the set token price, the machine dispenses one token or the corresponding number of tokens.
- If a sum of coins that is not divisible by the token value is inserted, the machine waits 60 seconds for the amount to be topped up to a value divisible by the token value (the countdown status is graphically displayed on the touch screen). It then closes the transaction and dispenses the corresponding number of paid tokens.
- Example: The token price is CZK 20. The customer inserts CZK 50. The machine waits for an additional CZK 10 to be inserted.
 - After the total credit of CZK 60 has been successfully inserted, the machine dispenses 3 tokens - at CZK 20 per piece.
 - If the customer does not insert any additional coins within 60 seconds, the transaction is considered closed and the machine dispenses 2 tokens. The remaining CZK 10 is retained by the operator.
- **The machine does not return coins!**

Card payment - optional module:

- The customer selects the number of tokens on the touch screen, up to a maximum of 10 tokens. After confirming payment by card, the required amount is displayed on the payment terminal. After successful card payment, the machine dispenses the corresponding number of tokens.

SETTINGS

SETTING OF ACCEPTED COINS

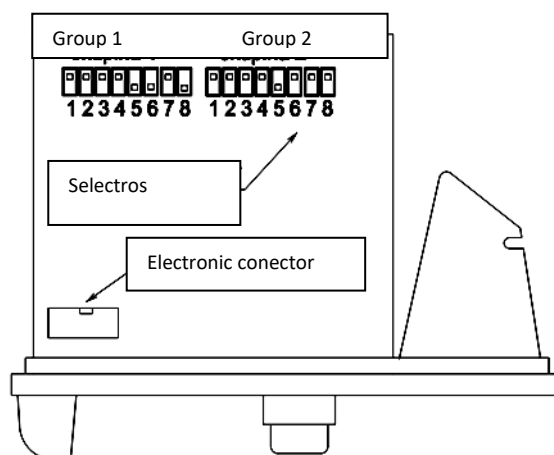
- Accepted coins are set by switching the selectors on the coin acceptor according to the table below. The selectors for the coins to be accepted must be in the lower position.
- Note: The "On" position on the coin acceptor means that the given coin is blocked.

| group 1 - Czech crown coins (blocking) | | | | | | | | group 2 - euro coins (blocking) | | | | | | | |
|--|-------|-------|--------|--------|--------|--------|-------------|---------------------------------|---------|---------|---------|---------|---------|---------|-------------|
| 1 | 2 | 3 | 4 | 5 | 6 | 7 | 8 | 1 | 2 | 3 | 4 | 5 | 6 | 7 | 8 |
| CZK 1 | CZK 2 | CZK 5 | CZK 10 | CZK 20 | CZK 50 | token | token - CZK | EUR 0.05 ** | EUR 0.1 | EUR 0.2 | EUR 0.5 | EUR 1.0 | EUR 2.0 | token | token - EUR |
| on | on | on | on | on | on | CZK 20 | on | on | on | on | on | on | on | EUR 0.5 | on |
| off | off | off | off | off | off | CZK 10 | off | off | off | off | off | off | off | EUR 1.0 | off |



Explanation

- If selector No. 5 of group 1 is moved to the off position, the machine will accept CZK 20 coins. In addition, selector No. 8 can, for example, be switched to the lower position (off), and the machine will also accept tokens. In total, the machine will therefore accept CZK 20 coins, and the token will be assigned a value of CZK 10 or CZK 20. Coins or tokens that are not selected by the selectors will not be accepted and will be returned.
- If the coin-operated machine does not accept coins, the sensors in the coin path are probably contaminated. After removing the front panel with the coin acceptor, it is necessary to press the white button on the front side of the coin acceptor. A small door on the side of the coin acceptor will open slightly and can then be opened by hand to a right angle relative to the coin acceptor. The space behind the door and the inner side of the door can be cleaned with a damp - not wet - cloth.
- **Aggressive solvents must never be used under any circumstances (acetone, toluene, etc.).**
- Cleaning of the coin acceptor may only be carried out with the power supply switched off.



SETTING AFTER REFILLING THE MAGAZINES

- After refilling all magazines to full capacity, press the button located between the magazines for 3 seconds. After pressing it, the machine is ready to dispense tokens. The error message disappears from the display, and the machine accepts coins and card payments. If the button is not pressed, the machine will remain out of service.

OTHER SETTINGS

- VAZ settings are managed via the remote management module and AZP. The price for one token (separately in Czech crowns and separately in euros) and the opening time are set.



Payment terminal settlement (optional module)

- The payment terminal performs settlement – forwarding financial funds to the bank.
- Settlements are performed automatically every day **at midnight**.
- Settlement must be performed at least once a week, but preferably every day. If the payment terminal is switched off at the time of settlement, settlement will not be performed and completed transactions will not be forwarded to the bank, but will remain stored in the payment terminal.
- The payment terminal has a capacity of approximately 500 transactions. After this capacity is exceeded, card payments will no longer be possible -> **settlement must be performed!**

INTERNET CONNECTION

- Internet connection according to local conditions (routed in the conduit together with the power supply or separately).
 - a. Wired Internet -**
 - standard, recommended by the manufacturer
 - The customer shall provide connection via UTP cable with an RJ45 connector. (min. F30 conduit)
 - b. Alternative LTE connection**
 - A data router with an external antenna will be supplied by AZP Brno.
 - The customer shall provide a data SIM card with the PIN deactivated.
 - SIM card size - standard SIM (miniSIM), or smaller + adapter.
 - Provision is made for routing the external antenna cable - a guiding string is installed in the conduit.
 - Place the antenna within reach of the 6 m cable from the device. The antenna is self-adhesive.

The operating instructions are supplied separately as part of the delivery of the mentioned device.

LIST OF PARTS

| | |
|-------------------------|----------------------|
| Coin acceptor | Order No. 1410403100 |
| Electronics | Order No. 1401800013 |
| Touch screen | Order No. 1189000062 |
| VAZ token magazine 1 pc | Order No. 1211008000 |



Appendix - stacking of tokens when filling the magazine:

