



Product datasheet

ZP 03

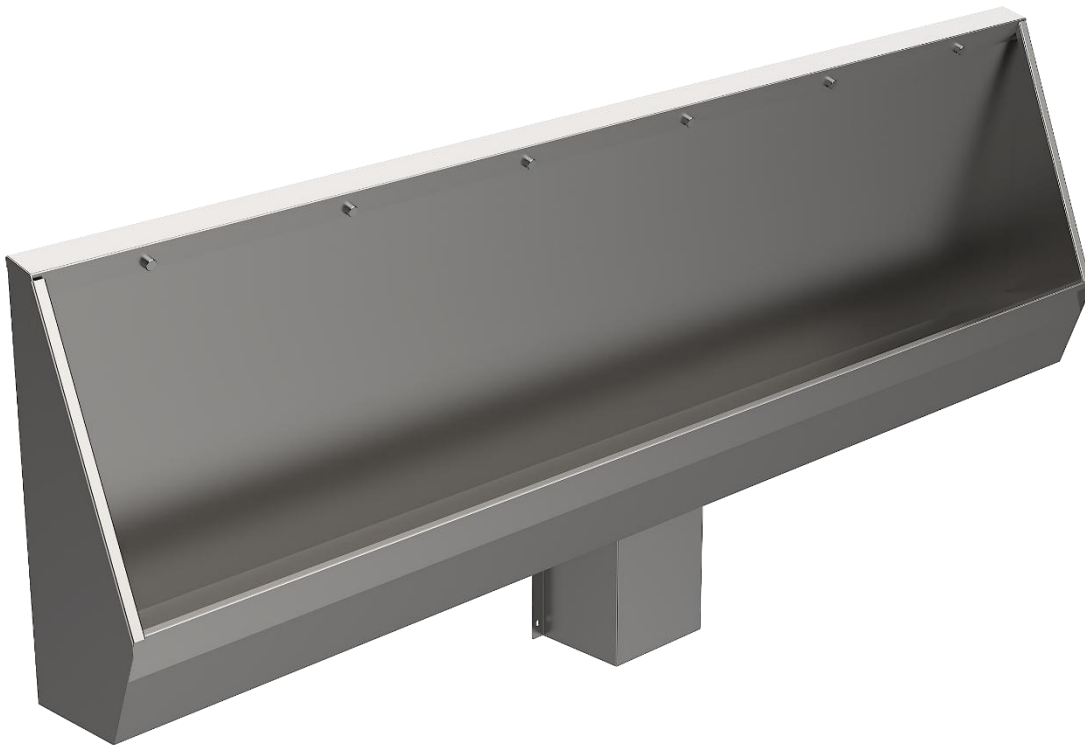
Wall-Mounted stainless steel urinal trough with with a central waste outlet

ZP 03 are stainless steel urinal troughs in various widths intended for sanitary facilities with a higher risk of damage. ZP 03 is a wall-mounted version of the trough with with a waste in the center. The standard models includes water distribution and durable anti-vandal stainless steel nozzles. Time-controlled COS flushing is recommended for flushing the gutter. It is also possible to supply another type of flushing on request - e.g. sensor flushing.

The troughs are manufactured in 3 basic standard widths. Other widths can be supplied on request according to your needs, the maximum possible width is 2500 mm. The trough is typically designed with a waste in the center of the trough. The waste siphon is protected by a cover.

The gutter is made of ČSN 17240 (AISI 304) material, 1.5 mm thick.

Würth products - preservation (order no. 0893 121 K), cleaning (order no. 893 121 1).



Complete delivery

- stainless steel trough with rinsing and water inlet
- siphon
- stainless steel siphon cover
- small assembly material



Standard versions

- ZP 03.1 wall-mounted stainless steel urinal trough 1250 mm
- ZP 03.2 wall-mounted stainless steel urinal trough 1900 mm
- ZP 03.3 wall-mounted stainless steel urinal trough 2500 mm

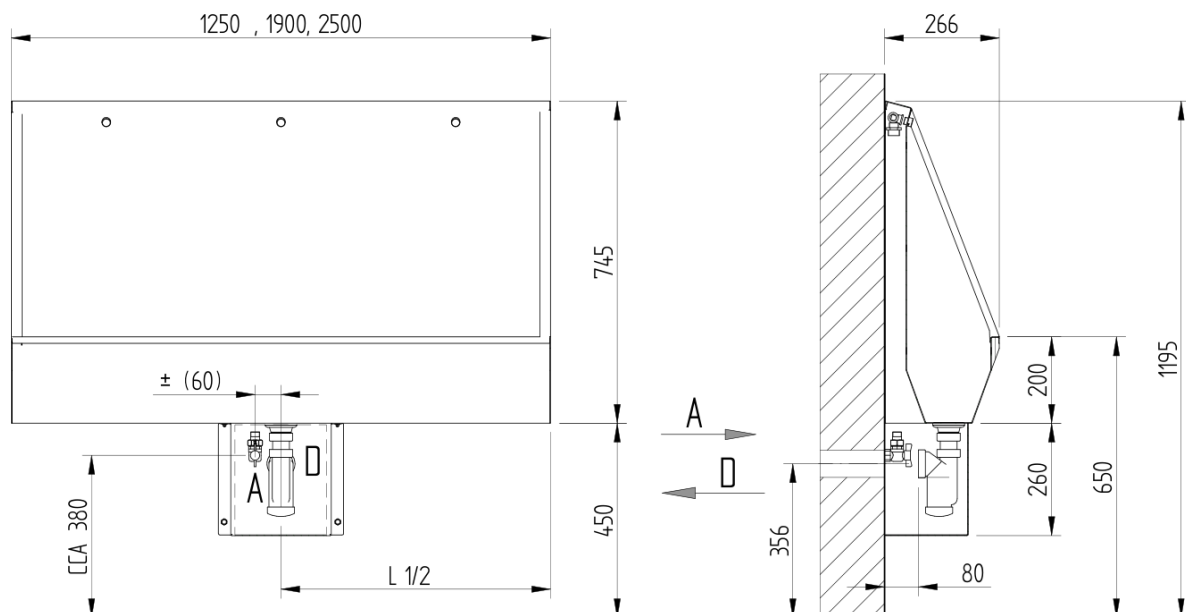
Technical details

- water inlet G 1/2" internal thread
- waste outlet 50 mm + extrusion (for 6/4" waste trap)
- weight according to type : 29 kg; 38.5 kg; 47.5 kg
- sheet thickness 1.5 mm
- material ČSN 17 240, AISI 304

Construction readiness requirements

- Water supply prepared according to the schematic.
- Waste outlet d = 50 mm prepared.

Diagram



A – Water inlet
D – Waste outlet