



Catalog sheet

Flip-up support bars

Description

U-shaped flip-up support bars are an essential aid used to support mobility around wash basins and toilets. You can enlarge the space around the toilet by flipping up the bar. Standard bar lengths are 600 mm, 813 mm, 850 mm and 900mm. Flip-up bars are made in versions with or without a toilet paper holder with three surface finish options.

Grab bars are made with the following surface finish options:

- White, powder-coated
- Polished
- Brushed (matte)

Complete delivery

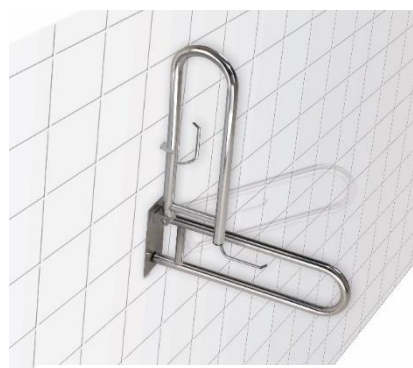
- Handle (handle)
- Fastening material

Standard versions

- R1061201 Hinged holder 600 mm, Stainless steel polished
- R1061203 Hinged holder 600 mm, Stainless steel brushed
- R1061204 Hinged holder 600 mm, White
- R1061201TP Hinged holder 600 mm+TP, Stainless steel polished
- R1061203TP Hinged holder 600 mm+TP, Stainless steel brushed
- R1061204TP Hinged holder 600 mm+TP, White
- R1061101 Hinged holder 813 mm, Stainless steel polished
- R1061103 Hinged holder 813 mm, Stainless steel brush
- R1061104 Hinged holder 813 mm, White
- R1061101TP Hinged holder 813 mm+TP, Stainless steel polished
- R1061103TP Hinged holder 813 mm+TP, Stainless steel brush
- R1061104TP Hinged holder 813 mm+TP, White
- R1061121 Hinged holder 813 mm, with support leg, stainless steel polished
- R1061123 Hinged holder 813 mm, with support leg, stainless steel brushed
- R1061124 Hinged holder 813 mm, with support leg, white
- R1061121TP Hinged holder 813 mm+TP, with support leg, Stainless steel polished
- R1061123TP Hinged holder 813 mm+TP, with support leg, Stainless steel brushed
- R1061124TP Hinged holder 813 mm+TP, with support leg, white
- R1061301 Hinged holder 850 mm, Stainless steel polished
- R1061303 Hinged holder 850 mm, Stainless steel brushed



Hinged handle U without toilet paper holder (TP)



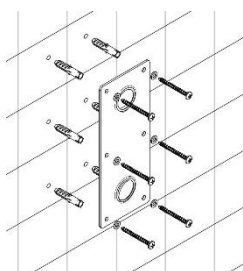
Hinged handle U with toilet paper holder (TP)

- R1061304 Hinged holder 850 mm, White
- R1061301TP Hinged holder 850 mm+TP, Stainless steel polished
- R1061303TP Hinged holder 850 mm+TP, Stainless steel brushed
- R1061304TP Hinged holder 850 mm+TP, White
- R1061141 Hinged holder 900 mm, Stainless steel polished
- R1061143 Hinged holder 900 mm, Stainless steel brushed
- R1061144 Hinged holder 900 mm, White
- R1061141TP Hinged holder 900 mm+TP, Stainless steel polished
- R1061143TP Hinged holder 900 mm+TP, Stainless steel brushed
- R1061144TP Hinged holder 900 mm+TP, White

Technical details

- Handle length:
 - 600mm;
 - 813mm;
 - 850mm;
 - 900mm
- Stainless steel tube d=32 mm;
- Mounting: Six-hole mounting plate 100×250×3 mm;

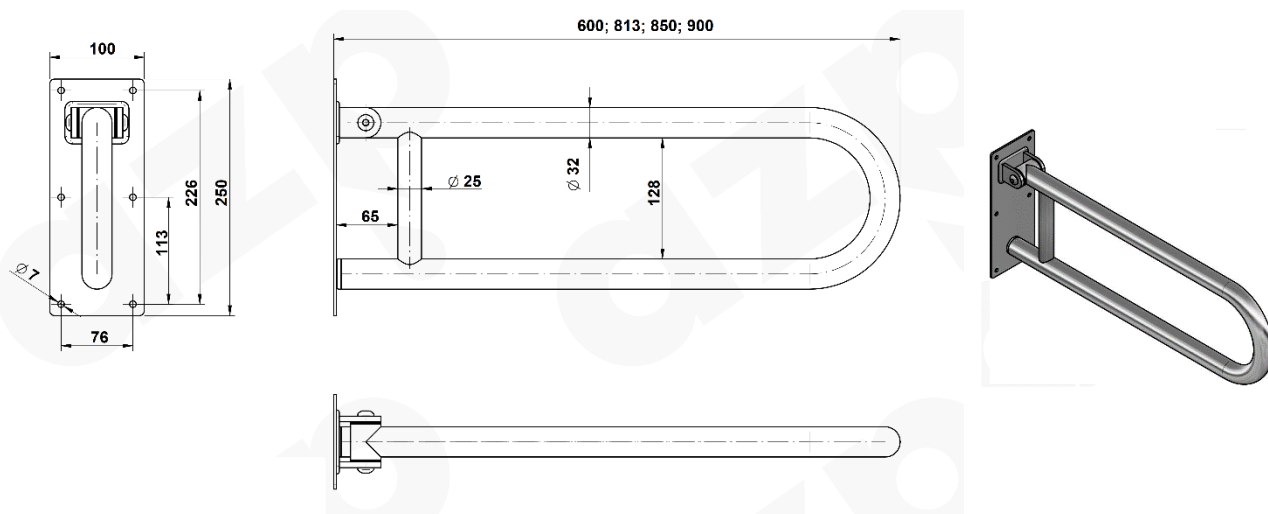
Construction readiness requirements

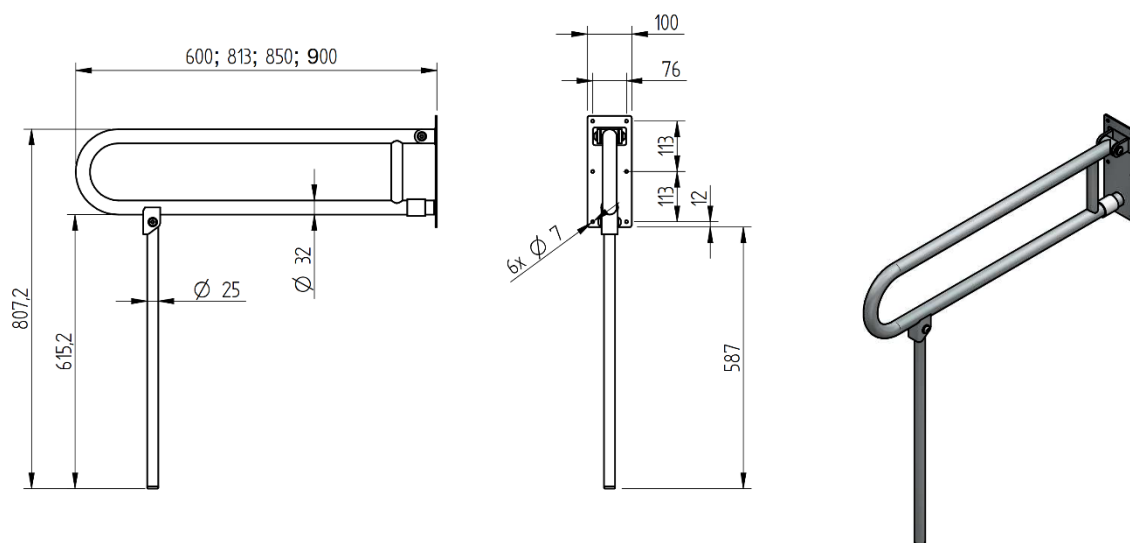


For installation, use a drill bit with a diameter matching that of the supplied wall plugs. To attach the bar to a wall using the supplied screws and wall plugs, it is necessary to use all of the anchoring holes.

The supplied fasteners are intended for walls with adequate load-bearing capacity (solid brick, concrete). For walls made from different materials, it is necessary to choose appropriate fasteners.

Diagram





Maintenance

Do not use mechanical cleaning. Do not clean with aggressive agents, liquid sand or thinner.