



## Installation and operating manual

### AFO 06 INV – Stainless steel drinking fountain with pressure valve

#### BASIC TECHNICAL DATA

Water inlet:	G 1/2"
Water pressure:	0.2 – 0.6 MPa – recommended pressure 0.3 MPa
Water outlet:	Pipe d = 40 mm
Inner dimension of the bowl:	D = 240 mm
Overall dimensions:	H 830 x W 275 x L 850 mm
Weight:	12 kg
Product website	<a href="#">AFO 06 INV</a>

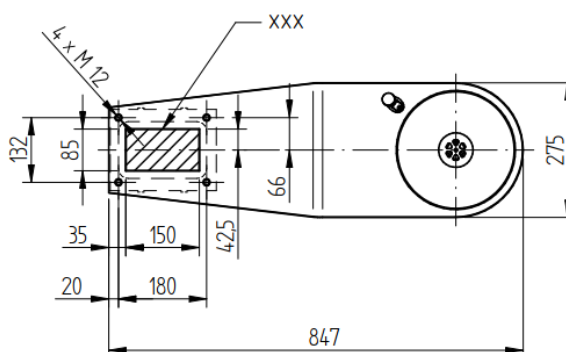
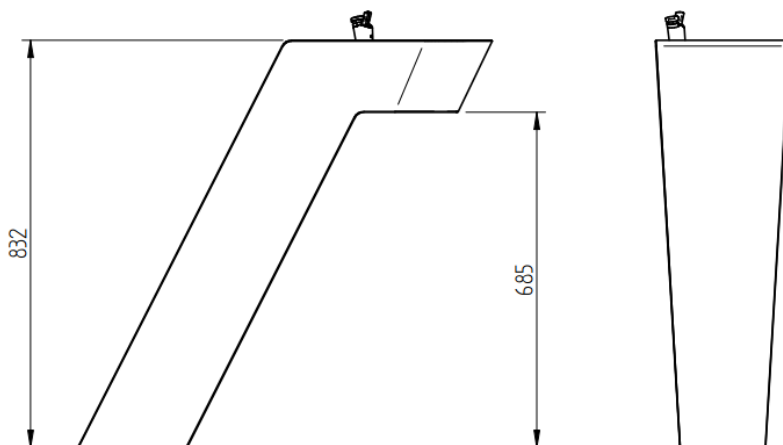
#### Description

- AFO 06 INV is a stainless steel drinking fountain of modern design to be simply operated.
- The drinking fountain is equipped with a pressure valve, after pushing it a stream of water flows out of the nozzle.
- The water flows after each pressing the valve. The water inlet is made by a flexible hose and terminated by a ball valve.
- Flexible design of both inlet and outlet enables variable connection of the fountain.

### Installation of the stainless steel drinking fountain

#### Site preparation for assembly

1. Ready G 1/2 " water inlet and outlet terminated by a neck d 40 mm - both at floor level or up to 10 cm above it. The inlet and outlet must be placed in a cross-hatched rectangle - see figure on the page 2 – place for water inlet and outlet marked "XXX".
2. The water inlet must be fitted with a filter to remove mechanical impurities from the water, which will significantly increase the reliability of the pressure valve.
3. Due to the flexible design of the fountain inlet and outlet, they can be removed as needed, within the limits of the movable inlets of the drinking fountain.



#### Assembly:

1. Install M12 threaded rods into the concrete base using a suitable chemical mortar.



2. Place the base on the inlet and outlet pipe, pay attention to its correct orientation - the drinking fountain is not symmetrical.
3. Connect the inlet hose with ball valve to the water inlet.
4. Connect the flexible outlet hose to the drain pipe.
5. Use the ball valve to set the maximum flow of water flowing out from the nozzle - additionally (without removing the fountain it is possible to limit the flow of water through the screw at the bottom of the nozzle.
6. Attach the cover - door of the drinking fountain.

### Package content

- stainless-steel frame
- pressure valve with nozzle
- fixing base
- waste outlet
- connection and waste hoses
- installation material

### Maintenance and cleaning

- The device is made of stainless steel of quality according to ČSN 17 240 (AISI 304), therefore it must not be operated in a chemically aggressive environment.
- **!! For its cleaning never use chlorine-containing products!!**
- Recommended WÜRTH detergents:
  - cleaner – art. no. 893 121 1
  - preservation – art. no. 0893 121 K.
- When placing the drinking fountain outdoors, it is necessary to drain the water from the drinking fountain before the winter season starts (water must not remain in the valve or in the siphon - blow out with compressed air), or disassemble the whole drinking fountain and store it in a building with antifreeze temperature. When the water in the pressure valve freezes, it will be irreparably damaged.