



Installation and operating instructions

MAP 2 - Coin machine for electric appliance operation

BASIC TECHNICAL SPECIFICATIONS

Coins accepted	2, 5, 10, 20, 50 CZK, 0,1; 0,2; 0,5; 1; 2 € ZT 2 tokens, other coins to order
Supply voltage:	12 V / 50 Hz
Coin machine input power:	4 VA, instantaneous power when accepting coins 10 VA
Adjustable washer running time:	5 seconds to 20 minutes in 5s increments 1 CZK each
Maximum output contact time:	85 hours
Outputs:	12 V / 50 Hz, max. 2 A
Maximum number of outputs:	5
Recommended power supply device:	ZAC 1/50

Coin machine function

- This coin machine serves the directly paid use of electrical appliances.
- The operator can set the time for which the appliance(s) will run for any of the coins accepted.
- The times are summed up if multiple coins are inserted.

Structural preparedness for installation

1. The coin machine is connected to the power source and to the electric distribution box by multicore cables (2 cores per output). The cable need not be a power cable because the output power is mere 12 Volts. If the interconnecting cable is hard (it is not a wire cable), a combining box and a wire conduit with wire conductors pulled through it must be used. CYKY cables must not be directly connected to the terminals of the electronics.
2. The coin machine's walled-in box at the level of the tiles or up to 20 mm underneath. The input opening of the box must be at the top.
3. Ready-for-use power part of the electrical installation, which means that each appliance must be switched on/off by means of its own contactor and must have its own circuit breaker (where the appliance type and input power require one).
- **Notice:** The coin machine output is 12 V / 50 Hz. An auxiliary relay is appropriate where no suitable contactor with 12 V control voltage is available.

Coin machine installation

1. Dismount the MAS box guard.
2. Open the lock, remove the door, remove the 2 cross screws from the frame beam, slide the coin box with its electronics and supporting plate as far as the stop at the beam, and take the assembly out.
3. Attach the frame to the box by means of the crews supplied; use the flat-head screws for the top beam. Connect the board's power supply and connect the electronic board's output terminals to the auxiliary relays in the distribution box.
4. Use the coin collection switches to set the coin values to the accepted. Switches 1 to 5 in group 1 serve to set the crown coins, switches 6 and 7 serve to set the value of the token being accepted (where tokens are used). Switch 8 must always be in the bottom position. Switches 1 to 5 in group 2 serve to set euros. Switches 6 and 7 are not used.
5. Slide the front panel including the coin box and electronics into the frame and fix with two screws from the bottom.



Setting

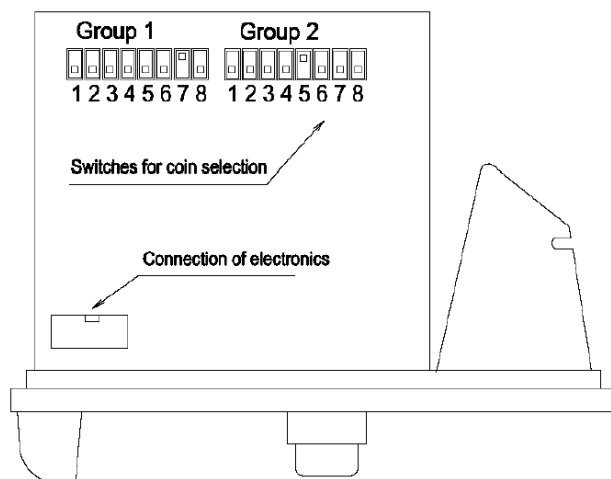
Accepted coins setting

Group 1											Group 2										
1	2	3	4	5	6	7	6	7	6	7	8	1	2	3	4	5	6	7	8		
accepts	accepts	accepts	accepts	accepts	accepts	accepts	accepts	accepts	accepts	accepts	in operation	accepts	accepts	accepts	accepts	accepts	unused	unused	unused	unused	
blocks	blocks	blocks	blocks	blocks	blocks	token -	token -	token -	all tokens	all blocked		blocks	blocks	blocks	blocks	blocks	blocks	blocks	blocks	blocks	blocks
1 CZK	2 CZK	5 CZK	10 CZK	20 CZK	token -	token -	token -	all tokens				0,05 €	0,1 €	0,2 €	0,5 €	1 €					

- The machine will accept 20 CZK coins if switch 5 / group 1 is ON. The machine will accept 1€ coins if switch 5 / group 2 is ON. The machine will also accept tokens if, e.g., switch 6 / group 1 is down and switch 7 / group 1 is up. In this setting, the machine will accept 20 CZK coins, 1€ coins, and tokens to which the value of 20 Kč has been assigned. Coins/tokens that have not been selected by means of the switches will not be accepted.

Time setting

- Push the programming button within 60 minutes of switching the system ON.
- Wait for the time for which the appliance should run for 1 crown and push the programming button once again. All LEDs will start illuminating green to indicate that the coin machine is in the operating mode.
- The time that elapsed from the first button pressing and the second button pressing is the time for which the appliance will run for 1 crown.
- THE TIME SET WILL BE ROUNDED BY THE MACHINE DOWN TO THE NEAREST 5-SECOND PERIOD.** Example: If the time between the 2 button pressings was 34 seconds, the time will be rounded to 30 seconds. Now the price is set to 1 crown for 30 seconds, or 2 crowns for 1 minute.



Switching each of the appliances OFF

- Any appliance can be switched OFF by using the DIP-switch next to the programming button. If the switch is in the ON position, the appliance is ON, and conversely, if the switch is in the position next to the number, the appliance is OFF. The LED is OFF and pushing this appliance's button will trigger no action. This status will not be changed by switching the power supply OFF and ON.

How to use the coin machine

- Push the button at the number of an appliance which is currently free, as signalled by the number's green illumination. The indicator starts flashing green. Insert one or more coins (so that the sum of their values matches the required appliance running time) into the coin machine. If you insert any coins that are not accepted by the machine (based on the machine's setting), the machine will return them. Now, after



inserting the coin(s), push the button at the same number once again to confirm the end of the coin insertion procedure.

- You must start inserting the coin(s) within 10 seconds after pushing the button; the interval between any two coins must not exceed 10 seconds; and the interval between the last coin and the new pushing of the button to confirm the end of the procedure must not exceed 10 seconds either.

Maintenance and cleaning

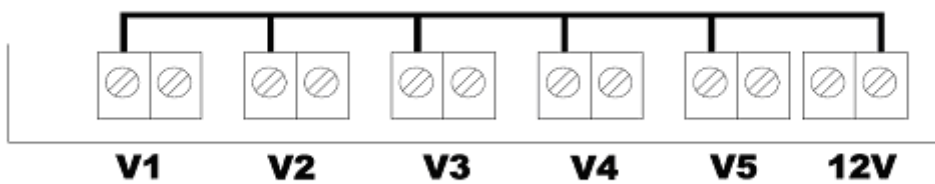
- A failure consisting in the coin machine not accepting coins is largely due to impurities on the sensors at the coin path. To remedy this, take out the front panel with the coin box and push the white button on the coin box front panel. The door on the coin box side will partly open. Open the door fully, i.e. perpendicularly to the box wall. You can clean the area behind the door and the inner door surface with a cloth which is slightly moist but not wet.
- Never use any aggressive solvent (acetone, toluene)!
- Be sure to disconnect the machine from its power supply prior to cleaning the coin box.



Connection of the electronics board



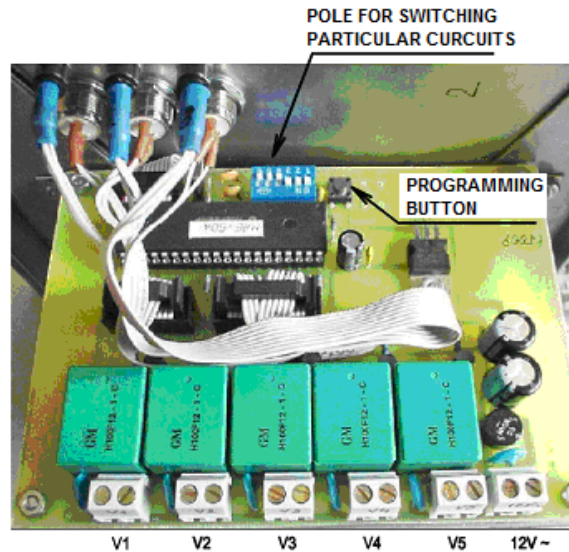
OUTPUT CONNECTIONS SCHEME



- V1 – V5 = connection of the outputs
- 12V ~ = connection of the 12V AC power supply
- DIP 1-6 = switching the outputs OFF, e.g. in the event of appliance failure

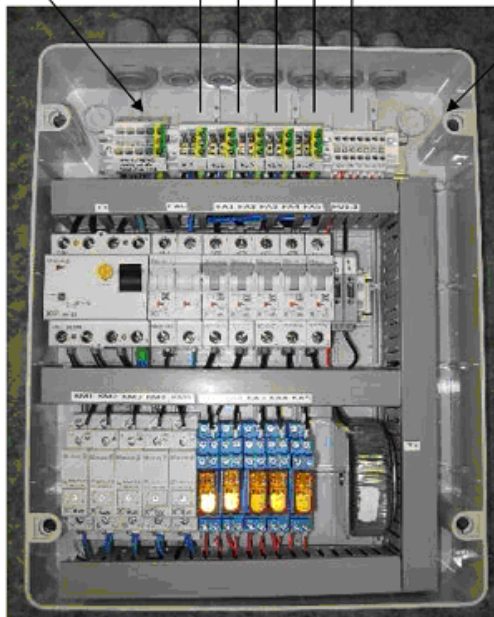


Scheme Connection MAP 2.5



Merging box KT-125 - made only by terminal block

input 3 x 400/230 V
 outputs 230 V to individual sockets



The merging box should not be used in case, that for connection of the outputs from the automat to heavy current wiring will be used stranded wires (eg. PNLV)

If the heavy current part is connected to the merging box by CYKY wire, installation hose must be placed, through which stranded wires in diameter $d = 0,35 - 0,75 \text{ mm}^2$ are drawn to the coin automat